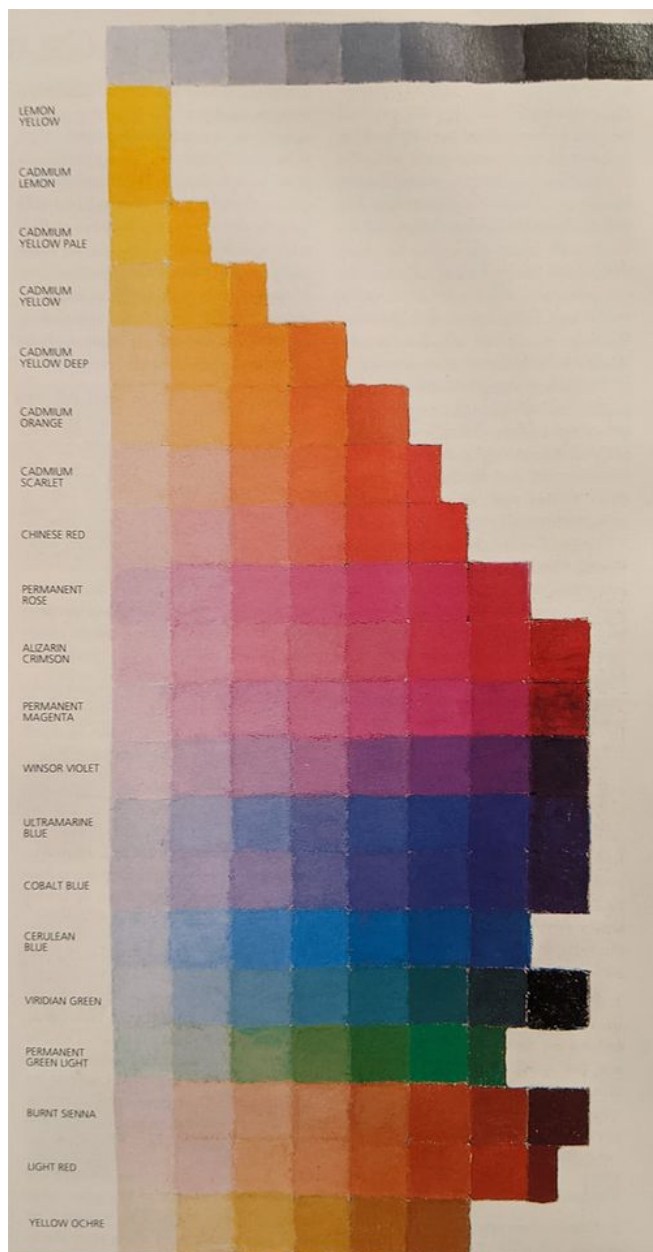


Here is a great exercise I recommend you do. Unlike other artist and teachers that use a "limited" palette, having fresh clean color from the tube makes depicting the atmosphere of light much easier. This requires having many colors on hand. This is something that can be acquired over time or start with student grade colors to practice learning to see. You will see as time goes on in this group how accurate starts are key and using a different color for each "mass" of light or dark helps not only depict the atmosphere but trains your eye to be ultra sensitive to color differences.

Match your color values vertically. Only use white. Values are the lightness or darkness of a color.



Following we will go over the color wheel which will help us get acquainted with the temperature and interactive properties of colors. Take your time, there's no rush!

BTW, I will add a PDF file for you to download.